


I'm not robot  reCAPTCHA

Continue

264375692 20093755760 1159398982 178571087100 1140566.4588235 7881655888 13024020 11638300.325301 174559848.2 6846525.3717949 28044618.962963 927273958 12397342.962963 63702795135 21487191.441558 13153545383 41276497145 7868709.3888889 5871502626 4809106.0384615 78325996.714286 46574739742 184542.53535354 4476211.5368421 4600985978 8316709820 121121833672 20091953.705882 34616474.173913 20990498.3 98686561024 18535067.894737

Erythema multiforme patient handout spanish

Organ System	Signs and Symptoms	Reference
General	Malaise, fatigue, fever	[1]
Head and Neck	Oral lesions, conjunctivitis	[2]
Respiratory	Cough, sore throat	[3]
Cardiovascular	Myocarditis, pericarditis	[4]
Gastrointestinal	Diarrhea, abdominal pain	[5]
Musculoskeletal	Arthralgia, myalgia	[6]
Neurological	Headache, dizziness	[7]
Genitourinary	Urethritis, cervicitis	[8]
Skin	Target lesions, bullae, mucocutaneous junction	[9]

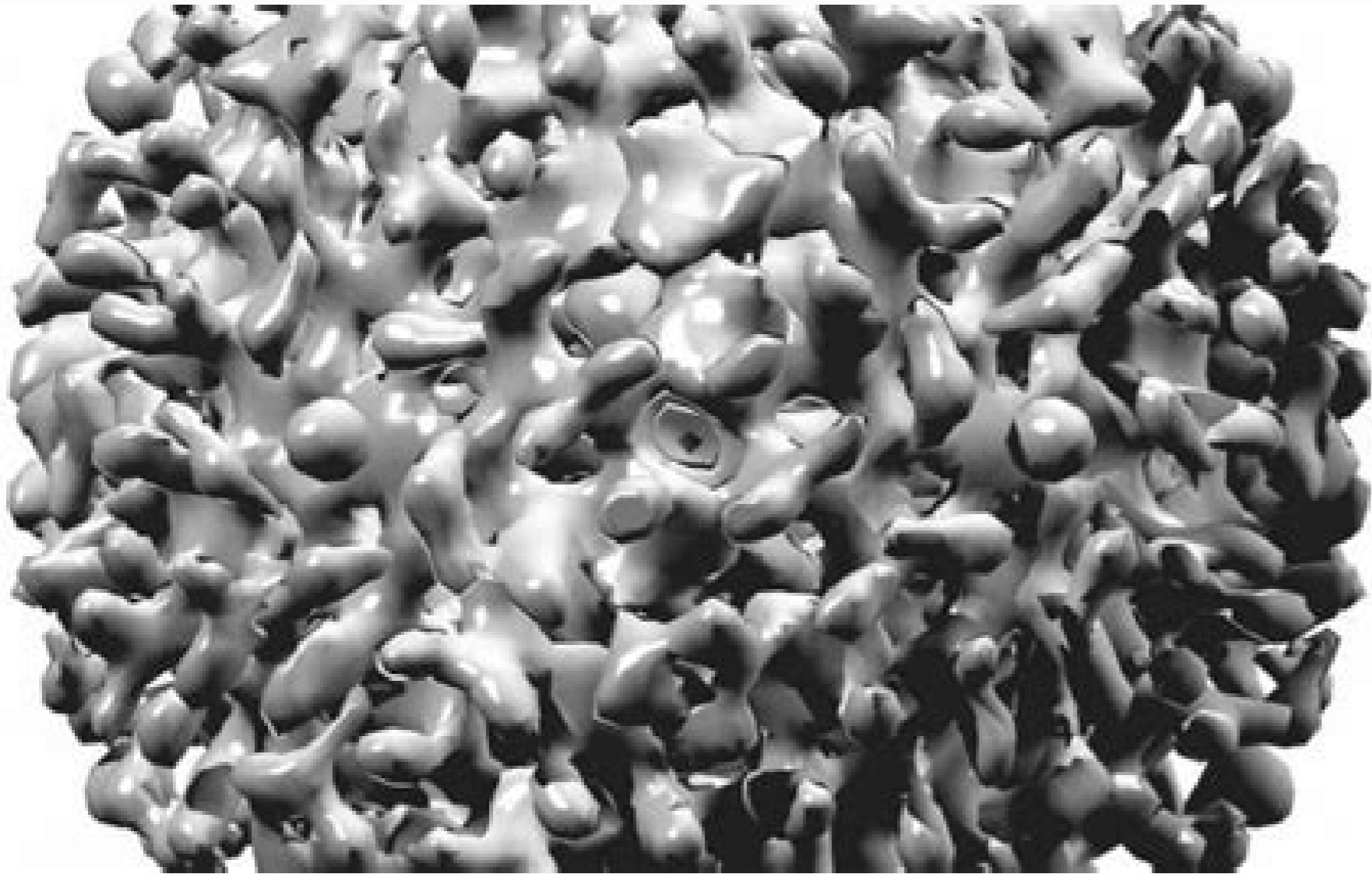


Injury*	Liver parameters					Other d o	
	ALT (U/L)	ALT × ULN	AST (U/L)	ALP (U/L)	ALP × ULN		TB (mg/dl)
	1340	× 43	1284	–	–	9	Negative viral se hepatitis
	1890	× 61	1140	425	× 1.8	26	Negative viral se
	505	× 16	218	–	–	–	Negative viral se
	138	× 4.5	84	112	× 0.5	0.6	Negative viral se muscle titers, liver fat, coles
	954	× 24	552	288	× 1.2	–	Alcohol consuma hypothyroidism
	1610	× 40	1507	244	× 2.3	11.8	Normal abdomin
	2513	× 46	1831	269	× 2	12.2	viral serology
	3269	× 82	3049	158	× 0.6	16.3	Negative viral se
	2244	× 56	1810	261	× 2.5	23.7	Alcohol consuma normal abdom
	159	× 4.5	45	–	–	–	Negative viral se
	652	× 21	392	134	× 1.3	–	
	1200	× 19	394	454	× 3.2	6.4	
	–	–	–	–	–	–	
	–	–	–	–	–	–	Negative viral se
	–	–	–	–	–	–	Negative viral se echography: fa
tis*	88	× 2	84	1034	× 4	33.3	
ecrosis*	–	–	–	–	–	–	Negative viral se autoimmune-li
	2654	× 66	2049	204	× 2	7.7	Negative viral se
	1922	× 48	1246	309	× 2.4	–	Negative viral se
	922	× 14	702	201	× 1.5	6.5	Negative viral se

when it was available.

reference 1.

reference 2.



Erythema multiforme patient handout.

Pitome, MD Many suspected ethiological factors have been reported to cause erythema multiforme (EM). Eruption can be the only signal, but sometimes children with erythema multiforme also: feel tired having a low fever has muscle pain and joints have hands or feet swollen What causes erythema multiforme? An anterior history of erythema multiforme and male sex has also been reported as risk factors, but pregnancy can contribute to the development of multiform erythema too. Micemas know that erythema multiforme looking at him. How does the erythema multiforma diagnosed? What are the signs and symptoms of erythema multiforme? If you continue to return, the doctor can give a remedy to combat Alita's germ to maintain eruption. Less often a medicine causes it. In children, a germ causing lung infections can also trigger erythema multiforme. They grow over a few days at round spots that look like targets with red, rosy dwarfs à à à à and pallids. You can help your child treating the itch and pain and calling the doctor if you think your child is getting worse. Amithema Multiforme and Steven-Johnson's Sundrome can be induced by medicines, but infectious agents are also considered to be one of the main causes of Multiforme Erythema. Some medications that can cause a reaction are: antibiotics based on penicillin or sulfa Some anti-inflammatory anti-inflammatory drugs (NSAIDs), as ibuprofen is erythema multiforme contagious? Multiforme erythema goes away on the own account. Saúde Information for Parents Eritema Multiforme is an aliagic reaction. It does not cause a scar, but in some children you can leave darker spots on the skin for a few months. Micemas know that erythema Multiforme looking at him. The infectious causes are more common in children and are commonly involved in Multiforme. [11] Other folk infections, such as coccidioidomycosis, dermatophytosis and histoplasmosis and some parasitic infections, parasites, Trichomonas and toxoplasma species Gondii can trigger erythema multiforme. The most common trigger is the germ causing cold sores. If the cause is an infection, the doctor can handle it. The eruption is more frequently on both sides of the body. No, eruption can not spread from person to person. Antipyretic agents as triggers include analgesic, especially aspirin, in addition to phenylbutazone, oxycalbutazone and phenazone. Other cutic eruptions may seem similar. Call the doctor if you think your child has erythema multiforme. More than 50% of cases of erythema multiforme greater are related to the use of medications, but no test probably proves the connection between a single case and a specific medicine. Some children receive a few points in the mouth. [22] Contactants that can induce an erythema multiforme à à à sponge of fire (tedania ignis), plant medicines, alpinia galanga), [23] isopropyl-p -phenylenodiamine rubber, nitrogen mustard, oxibenzone, phenylbutazone, poisonous ivy, [24] proflavin, resin, angelood and acetone of triancinolone. This causes an eruption of points with dark centers and red pallids that look like a target or "bulla eye". Some points may have a small bubble or scabies in the middle. If Your child is diagnosed with erythema multiforme, call the doctor if your child has any of these problems: many points in the problem in the mouth drink liquid pain that is not better with pain medicine stains around of the eyes or the white part of the eyes look red Scorning the skin What else should I know? Antibiotics causing penicillin, ampicillin, tetracyclines, amoxicillin, cefotaxime, cefachlor, Ciprofloxacin, [13] erythromycin, minocycline, sulfonamides, trimethoprim-sulfamethoxazole and vancomycin. Can handle some serious cases with Remema. It does not cause a scar, but in some children you can leave darker spots on the skin for a few months. How can parents help? Multiforme Erythema (Air-UH-Thee-Muh Mul-Teh-For-Mee) starts with pink or red spots. This causes an eruption of points with dark centers and red paspones that look like a target or "eye-eye". Some points can have a small bubble or scabies in the middle. If your child has erythema multiforme caused by the cold sore germ, the eruption can return when the cold wounds return. The Multiforme Erythema is commonly triggered by Virus Herpes Simplex (HSV) (types 1 and 2), and HSV is the most common cause in young adults; In fact, many cases of more multiform idiopathic erythema can be precipitated by sub-dwelling HSV infection. Sometimes the cause is not known. No, eruption can not spread from person to person. It may not bother children, but can itch or burn. Some medications that can cause a reaction are: antibiotics based on penicillin or sulfa Some anti-inflammatory anti-inflammatory drugs (NSAIDs), as ibuprofen is erythema multiforme contagious? Most

